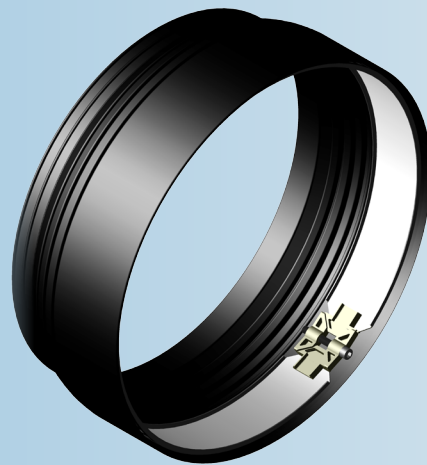


Kor-N-Seal® II

306 Series Pipe-to-Manhole Connector



CORRUGATED RUBBER DESIGN

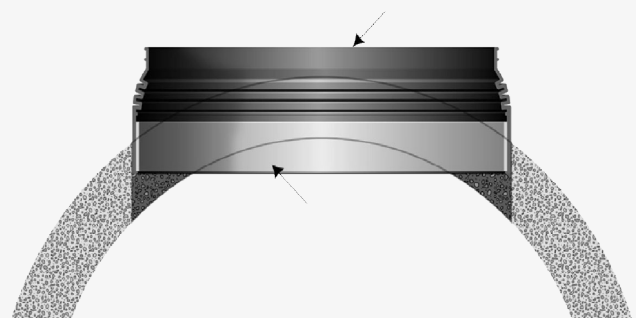
Allows you to fit large diameter pipe into the smallest possible manhole structures.

Can be used in cored or formed holes

Meets the specifications of ASTM C923

Easy-to-install

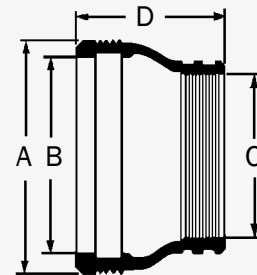
The Patented 4" wide Stainless Steel Korbond is able to overcome the curvature of smaller sized manholes and provide a watertight seal.



P/N	Suggested Pipe O.D Range (inches)	Hole Size Range (inches)	Connector Dimensions (inches)				Pipe Clamp		Minimum Manhole Size
			A	B	C	D	Qty	P/N	
S306-22 S306-22L	17.625-18.500 18.500-19.625	21.98-22.13	19.875	19	10.5	2	I-318	36/4	
				20		2	I-348		
S306-24 S306-24L	19.625-20.500 20.500-21.625	23.98-24.13	21.875	21	10.5	4	I-180	36/4	
				22		4			
S306-26 S306-26L	21.625-22.500 22.500-23.625	26.00-26.20	23.875	23	10.5	4	I-190	36/4	
				24		4	I-218		
S306-28 S306-28L	23.625-24.500 24.500-25.625	28.00-28.20	25.875	25	10.5	4	I-218	48/5	
				26		4			
S306-30 S306-30L	25.625-26.500 26.500-27.625	30.00-30.20	27.875	27	10.5	4	I-218	48/5	
				28		4	I-242		
S306-30L-32	26.500-27.625	32.00-32.20	29.875	28	10.5	4	I-212	48/5	
S306-32 S306-32L	27.625-28.500 28.500-29.625	32.00-32.20	29.875	29	10.5	4	I-242	48/5	
				30		4			
S306-34 S306-34L	29.625-30.500 30.500-31.625	34.00-34.20	31.875	31	10.5	4	I-258	48/5	
				32		4			
S306-36 S306-36L	31.625-32.500 32.500-33.000	36.00-36.20	33.250	33	10.5	4	80667 Power Gear	60/6	
				34		4			
S306-36-STORM S306-36L-STORM	31.625-32.500 32.500-33.625	36.00-36.20	33.875	33	10.5	4	I-282	60/6	
				34		4			
S306-38 S306-38L	33.625-34.500 34.500-35.000	38.00-38.20	35.250	35	10.5	4	80667 Power Gear	60/6	
				36		4			
S306-38LS-PG	34.500-35.625	38.00-38.20	35.875	36	10.5	4	80667 Power Gear	60/6	
S306-38-STORM S306-38L-STORM	33.625-34.500 34.500-35.625	38.00-38.20	35.875	35	10.5	4	I-282	60/6	
				36		4	I-306		

P/N	Suggested Pipe O.D Range (inches)	Hole Size Range (inches)	Connector Dimensions (inches)				Pipe Clamp		Minimum Manhole Size
			A	B	C	D	Qty	P/N	
S306-40 S306-40L	35.625-36.500 36.500-37.000	40.00-40.20	37.250	37	10.5	4	80667 Power Gear	60/6	
				38		4			
S306-40-STORM S306-40L-STORM	35.625-36.500 36.500-37.625	40.00-40.20	37.875	37	10.5	4	I-306	60/6	
				38		4			
S306-42 S306-42L	37.625-38.500 38.500-39.000	42.00-42.20	39.250	39	10.5	6	80682 Power Gear	72/7	
				40		6			
S306-42-STORM S306-42L-STORM	37.625-38.500 38.500-39.625	42.00-42.20	39.875	39	10.5	4	I-318	72/7	
				40		4	I-348		
S306-44 S306-44L	39.625-40.500 40.500-41.000	44.00-44.20	41.250	41	10.5	8	80682 Power Gear	72/7	
				42		8			
S306-44LS-PG	40.500-41.625	44.00-44.20	41.875	42	10.5	8	80682 Power Gear	72/7	
S306-44-STORM S306-44L-STORM	39.625-40.500 40.500-41.625	44.00-44.20	41.875	41	10.5	4	I-348	72/7	
				42		4			
S306-44L-46 S306-44L-46-STORM	40.500-41.000 40.500-41.625	46.00-46.20	41.875	41	10.5	8	80682 Power Gear	72/7	
				42		4	I-348		
S306-46 S306-46L	41.625-42.500 42.500-43.000	46.00-46.20	43.250	43	10.5	6	80667 Power Gear	72/7	
				44		6			
S306-46-STORM S306-46L-STORM	41.625-42.500 42.500-43.625	46.00-46.20	43.875	43	10.5	4	I-348	72/7	
				43		4			
S306-48 S306-48L	43.625-44.500 44.500-45.000	48.00-48.20	45.250	45	10.5	6	80667 Power Gear	72/7	
				46		6			
S306-48-STORM S306-48L-STORM	43.625-44.500 44.500-45.625	48.00-48.20	45.875	45	10.5	6	I-242	72/7	
				46		6	I-258		

Adapters are required when using corrugated pipe.
Refer to the Corrugated Pipe Adapter Data Sheet for details.



Covered under U.S. Patent No. 6,641,176


TRELLEBORG
WWW.TRELLEBORG.COM/PIPE-SEALS