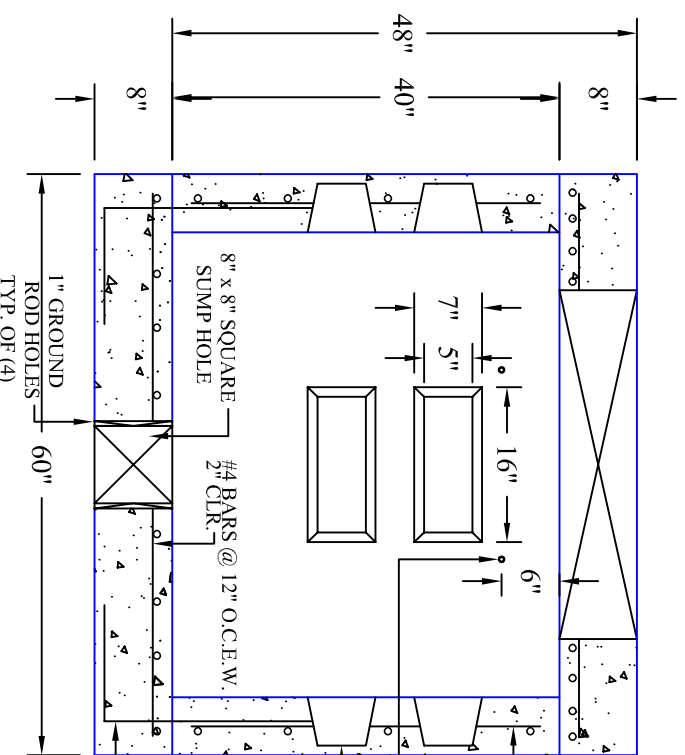
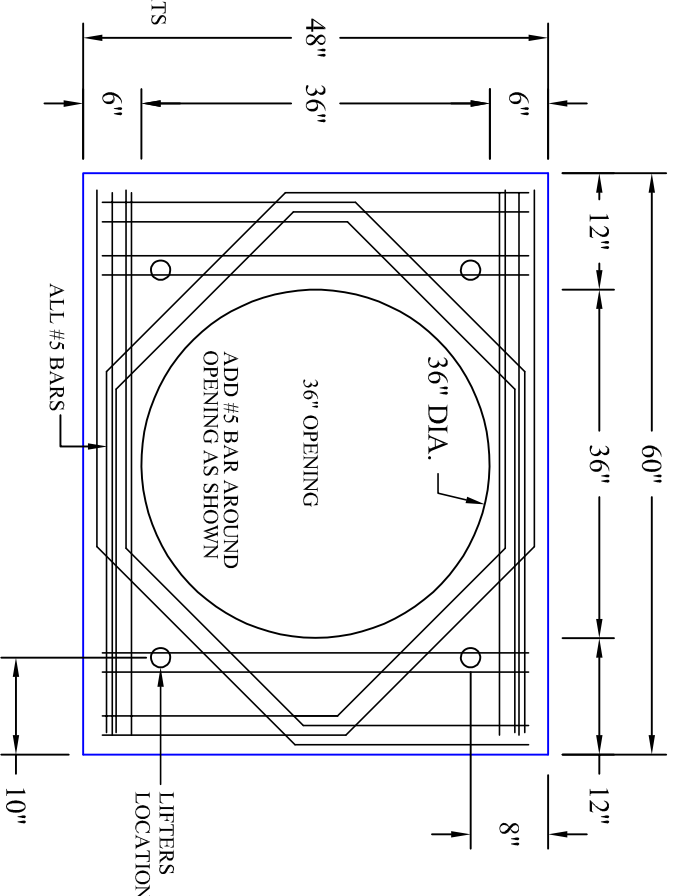


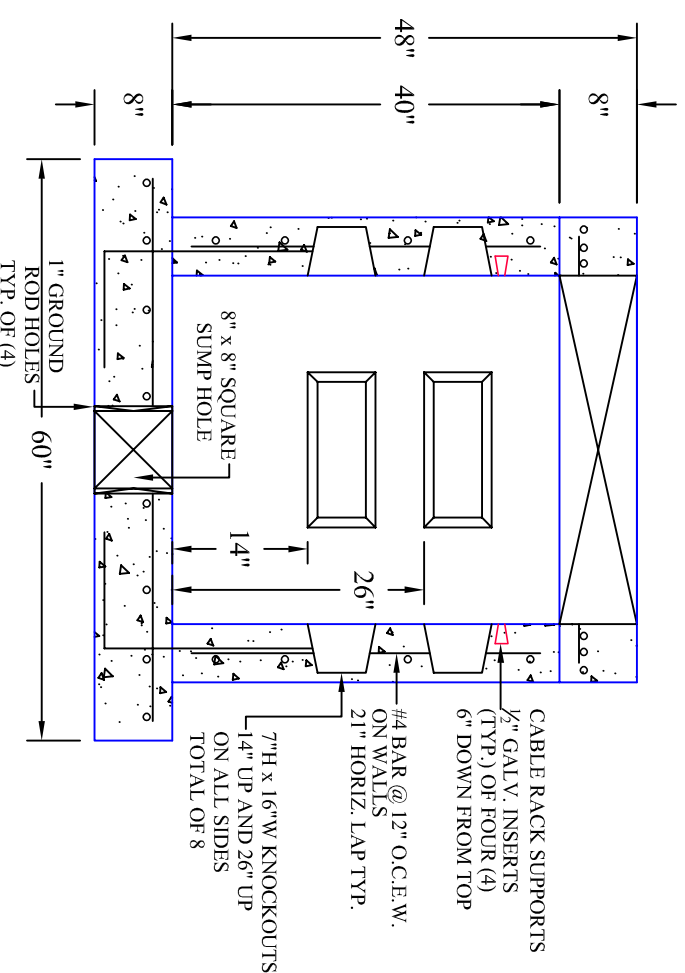
PLAN VIEW



SECTION A-A'



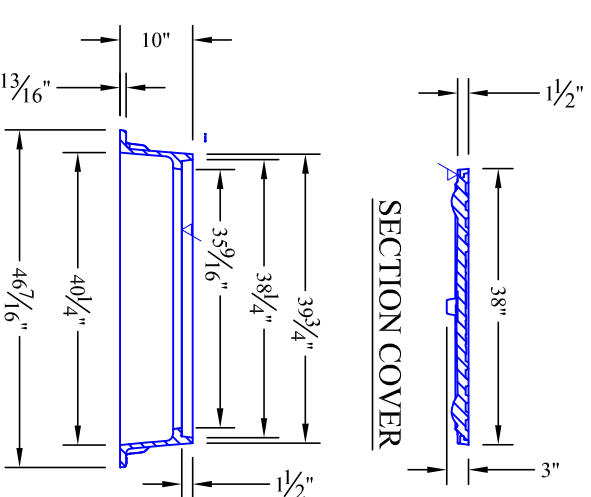
TOP SLAB



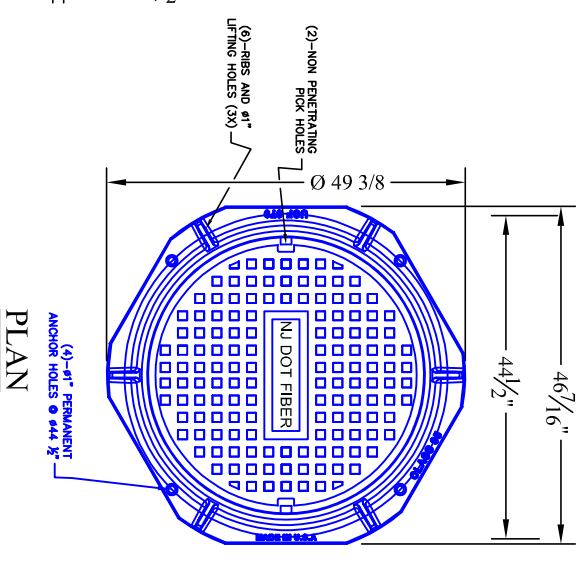
SECTION B-B'

- INSTALLATION NOTES
1. AFTER INSTALLATION OF CONDUIT, COMPLETELY SEAL ALL OPEN RECESSES WITH BRICK AND GROUT.
 2. SET THE TOP OF THE RING AND COVER AT ROADWAY GRADE.
 3. TERMINATE RIGID NON-METALLIC CONDUITS WITH BELL END FLUSH WITH THE INSIDE WALL OF THE JUNCTION BOX
 4. TERMINATE FLEXIBLE NON METALLIC CONDUIT (FNMIC) IN ACCORDANCE WITH THE CONTRACT DOCUMENTS AND MANUFACTURERS REQUIREMENTS. FNMIC TO LAY ON THE GRAVEL/BROKEN STONE IN JB. CONDUIT ENDS TO EXTEND 4" PAST THE INSIDE WALL OF THE JB.
 5. ENSURE CONDUITS ENTER INTO THE JUNCTION BOX PERPENDICULAR TO WALLS OR AS APPROVED BY THE ENGINEER. MAINTAIN A 2" SEPARATION BETWEEN ADJACENT WALLS, CONDUITS AND CABLE RACKS.
 6. PROVIDE 4 CABLE RACKS AS INDICATED.
 7. PROVIDE 8" THICK LAYER OF COMPACTED 3/4" GRAVEL OR BROKEN STONE.
 8. PROVIDE AND INSTALL GROUND ROAD AS PER NEC REQUIREMENTS.

- DESIGN NOTES
1. NJDOT CLASS A CONCRETE AT 28 DAYS. DESIGN COMPRESSION STRENGTH F_C - 4000 PSI ACHIEVE DESIGN STRENGTH = 4,600 PSI AT DAYS
 2. REINFORCEMENT STEEL PER ASTM A-615.
 3. DESIGNED BY LICENSED NIPE FOR HS-25 LOADING
 4. ANY ALTERATION TO THIS DRAWING MUST BE MADE TO GSP IN WRITING PRIOR TO PRODUCTION.
 5. CONTRACTOR TO OFFLOAD ON SITE.
 6. WEIGHT : BASE + FLOOR = 6,400 LBS.
 7. TOP SLAB = 1,300 LBS.
 7. (4) 5" UTILITY ANCHORS ON BASE FLOOR
 - (4) 5" UTILITY ANCHORS ON TOP SLAB.
 8. COVER IS ASTM-A48-GRAY-IRON-CLASS535B



SECTION COVER



PLAN

SECTION FRAME

8321 NW 93rd Street Miami, FL 33155-5702 Phone: 305-435-5702 Fax: 305-487-9429 www.usfoundry.com © 2012 US Foundry, Inc.	
USF 679 RING & AZ-1 COVER	
LOAD CLASSIFICATION: LOAD	SCALE: NTS
MATERIAL: ASTM-A48-GRAY-IRON-CLASS535B	Ring No: 8020105
Cover No: 8017289	DATE: 01-08-14
DESIGNED BY: ULS/OD	CHECKED BY: ULS/OD
REV: 0	DATE:
REV BY: INT	

NJDOT
JUNCTION BOX, ITS TYPE B



GARDEN STATE PRECAST
1630 WYCKOFF ROAD
WALL, NJ 07719

P. 732-938-4436

F. 732-938-7096

