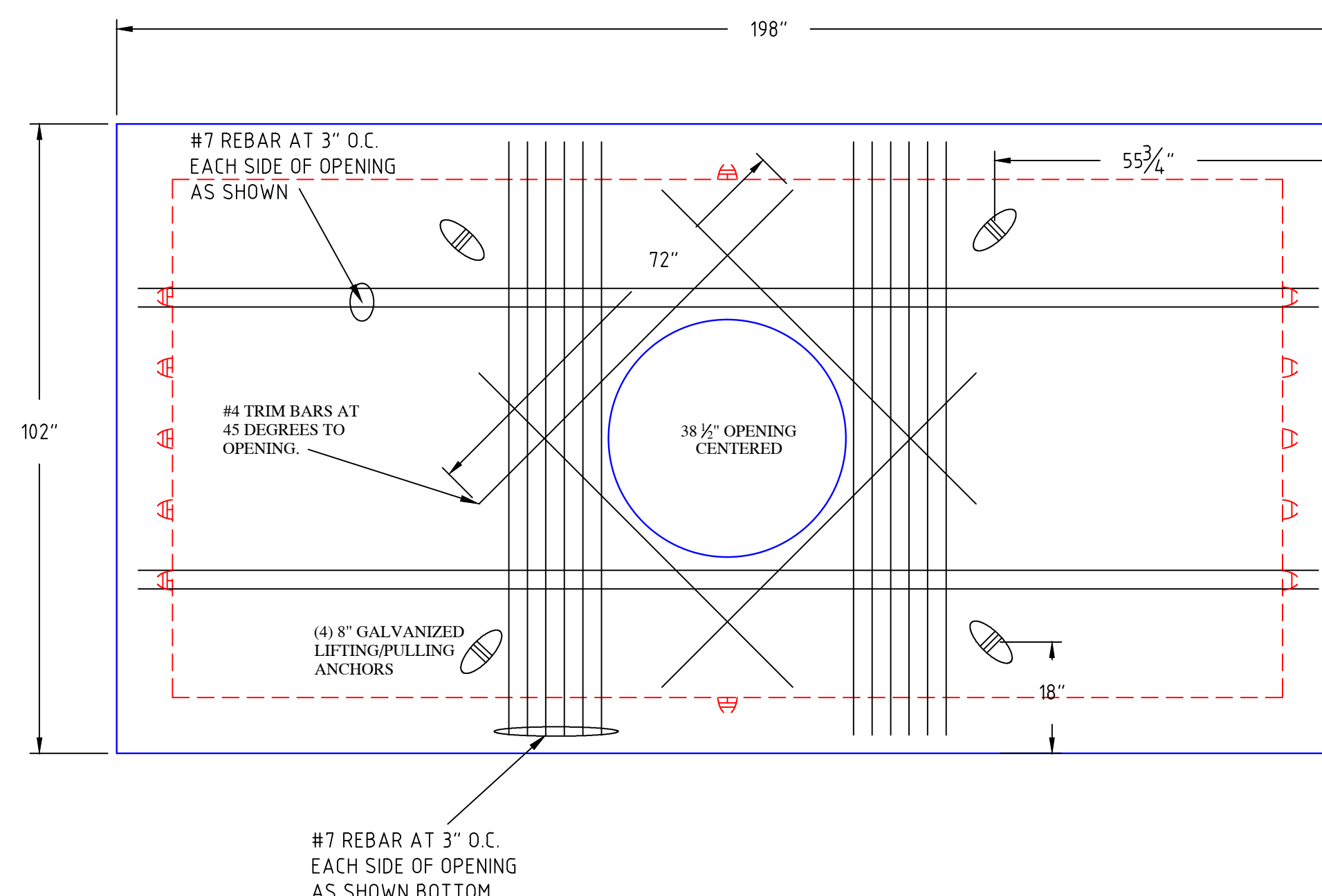
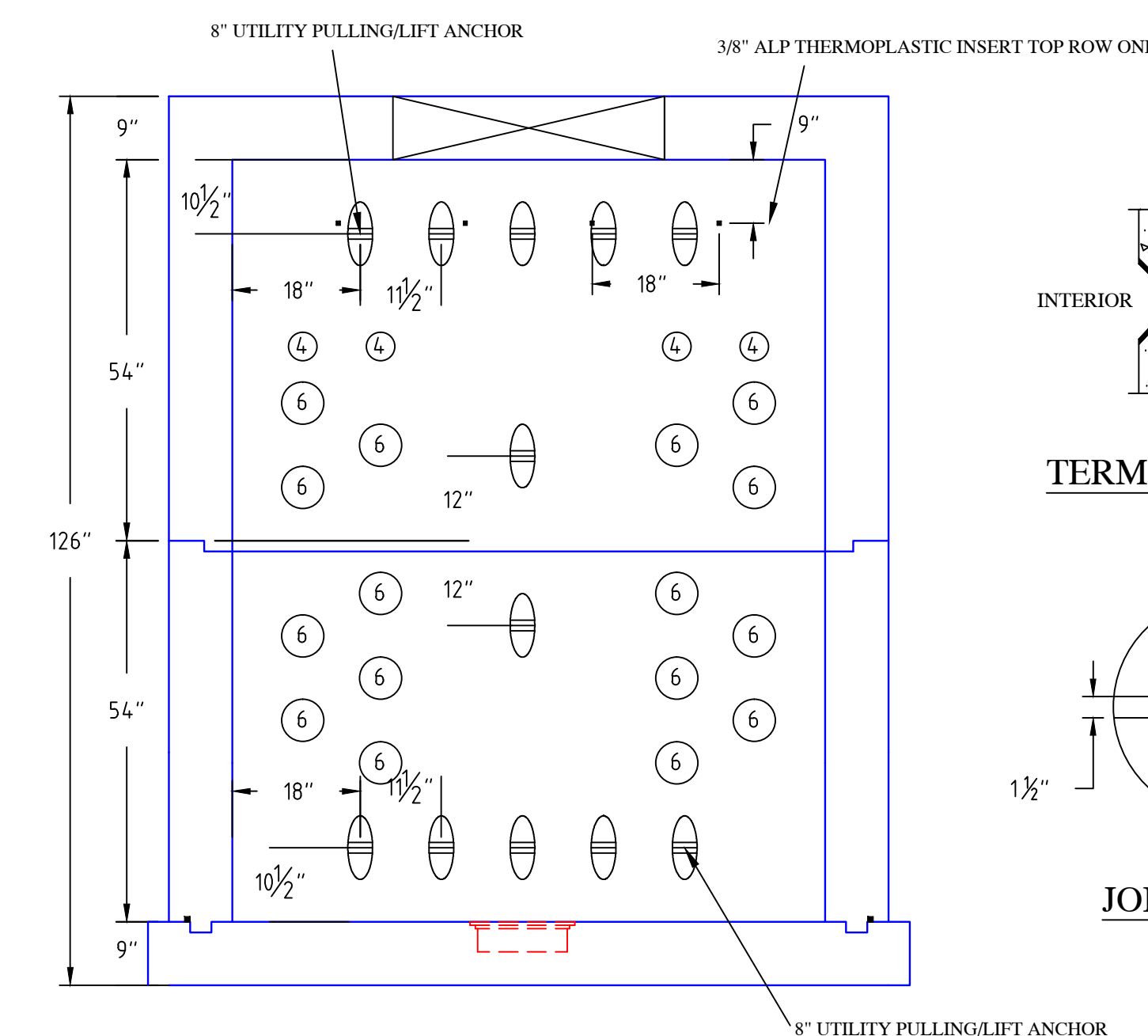


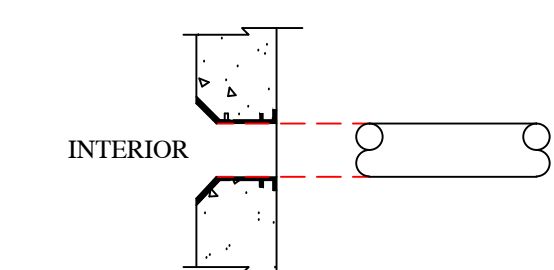
PLAN VIEW
LESS TOP SLAB



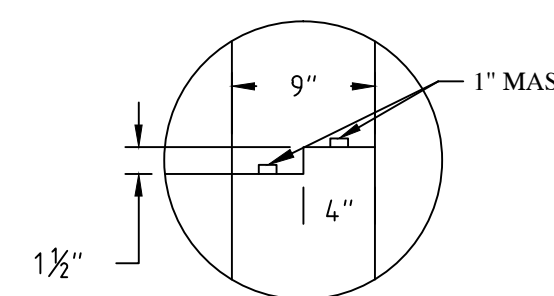
TOP SLAB LAYOUT



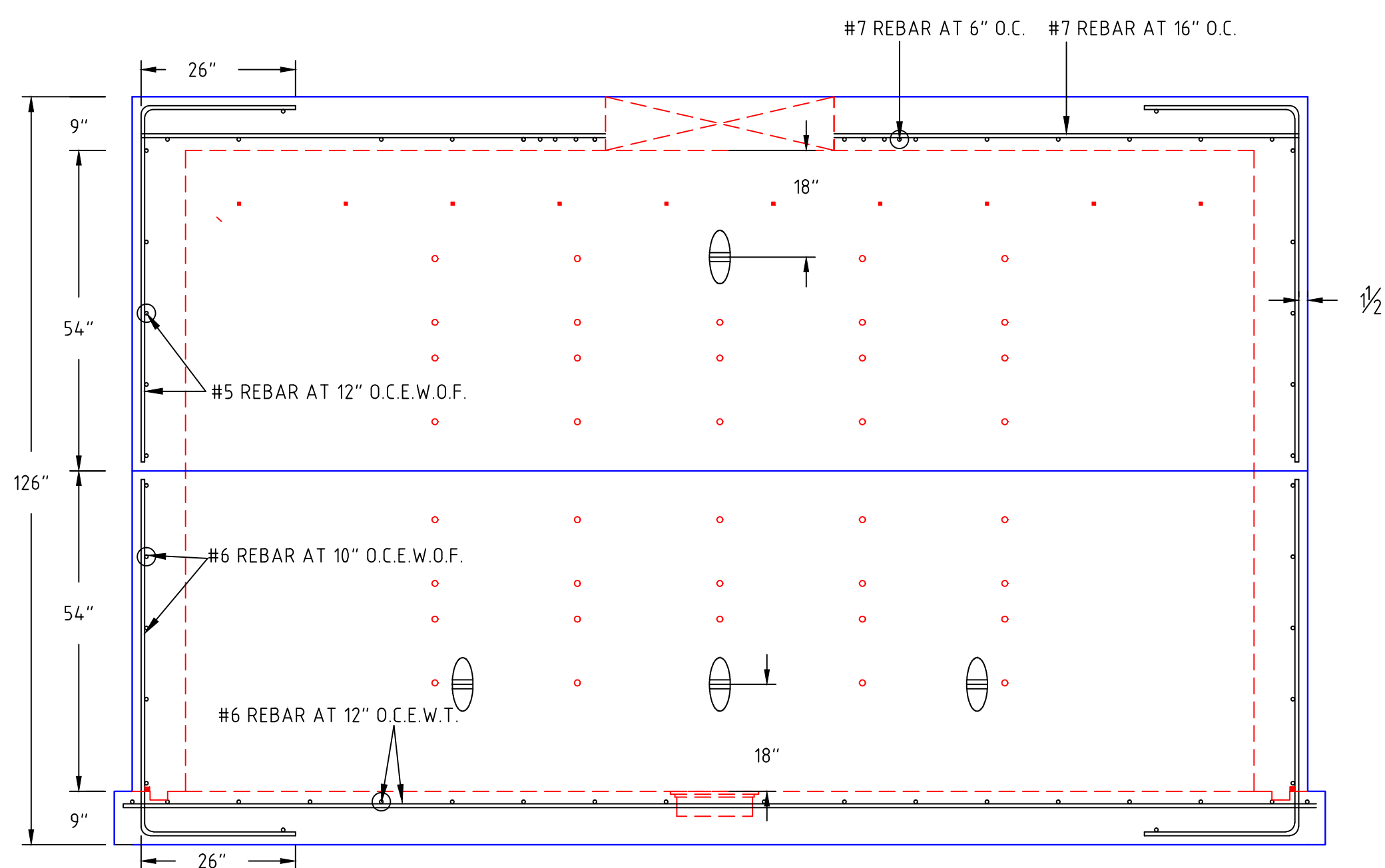
SECTION B-B



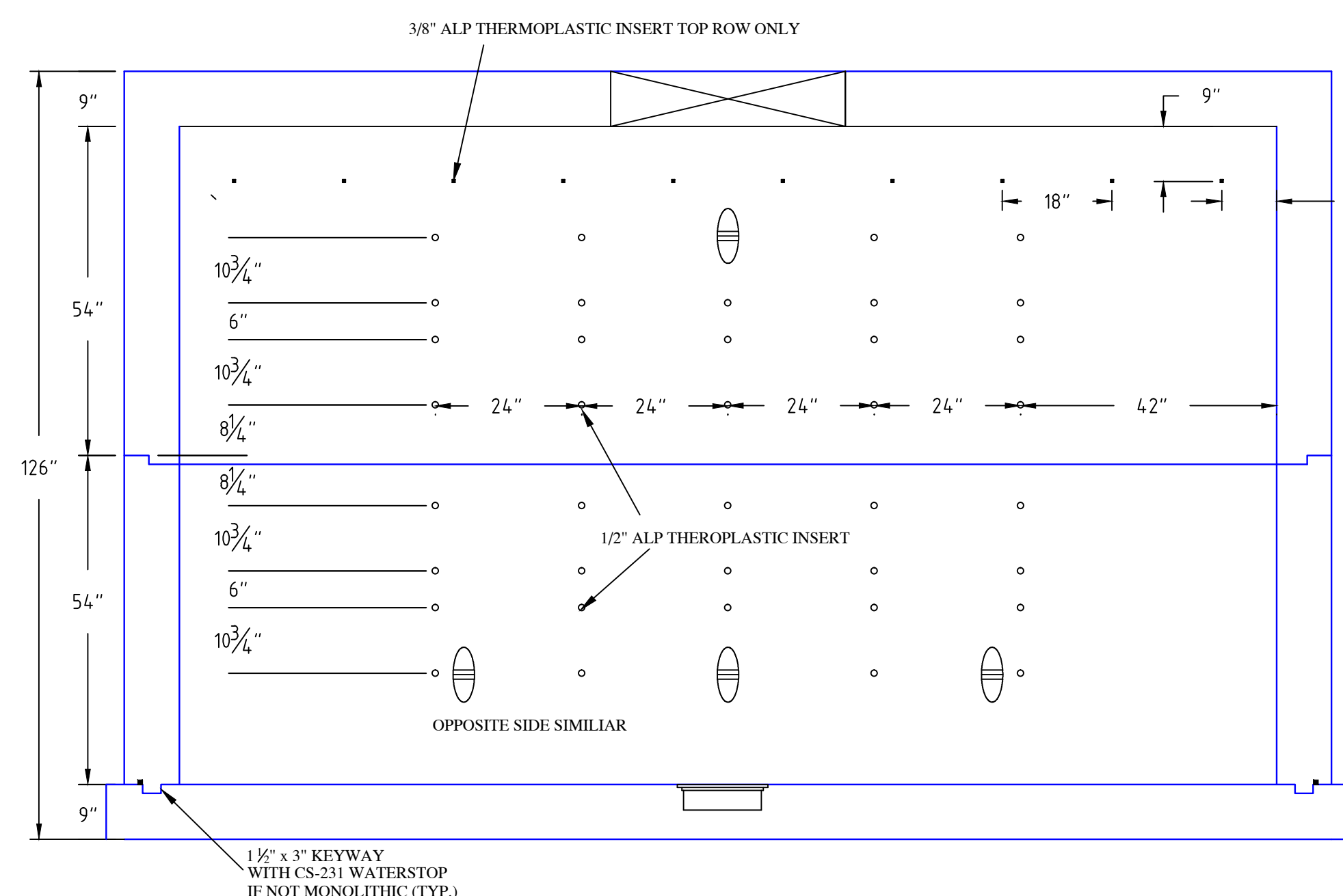
TERMINATOR DETAIL



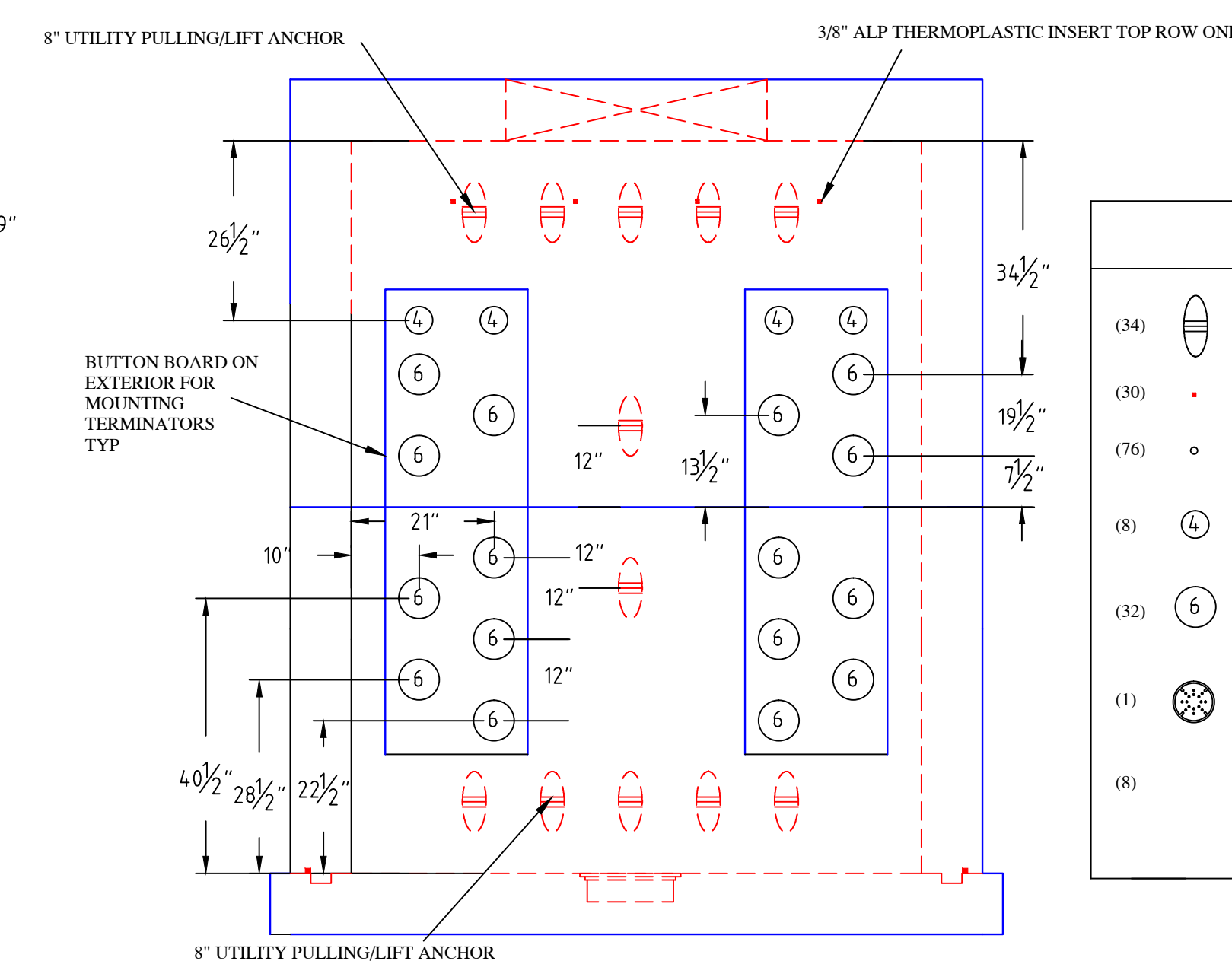
JOINT DETAIL



FRONT AND REAR VIEW



SECTION A-A



VIEW C-C

| KEY | |
|------|---|
| (34) | 8" UTILITY PULLING/LIFT ANCHOR |
| (30) | 3/8" ALP THERMOPLASTIC INSERT |
| (76) | 1/2" ALP THERMOPLASTIC INSERT |
| (8) | 4" MA INDUSTRIES CONDUIT TERM. |
| (32) | 6" MA INDUSTRIES CONDUIT TERM. |
| (1) | 12" DIA. MA INDUSTRIES SUMP PAN |
| (8) | 1" CONEAL CS 102 JOINT SEALANT X 14.5' ROLL |

NOTES:

- 5,000 PSI CONCRETE AT 28 DAYS.
- REINFORCEMENT BARS PER ASTM A-615, GRADE 60 WELDED WIRE FABRIC PER ASTM A-185, GRADE 70
- DESIGN LOADING AASHTO HS25-44. 0'-2' OF COVER
- CONSTRUCTION JOINT SEALED W/ 1" BUTYL MASTIC STRIP.
- ANY ALTERATION TO THIS DRAWING MUST BE SUBMITTED TO GSP IN WRITING PRIOR TO PRODUCTION.
- WATER TABLE DESIGNED AT 3' BELOW SURFACE
- COVERS ARE DESIGNED FOR TRAFFIC AREAS
- STRUCTURAL DESIGN IN ACCORDANCE WITH ASTM C-857-07 AND ACI-318.
- MANUFACTURED IN ACCORDANCE WITH ASTM C-858-09.
- ALL REINFORCEMENT COVER IS 1 1/2" UNO

| REV | BY | C'D | DATE |
|-------------------------|-----|-------|---------|
| 3 | PEH | C'K'D | 8-28-19 |
| DRAWN BY PEH 3-12-19 | | | |

HEAVIEST PICK:
54" BASE = 48,000 LBS.
54" TOP = 46,000 LBS.



GARDEN STATE PRECAST
P.O. BOX 702
FARMINGDALE, NJ 07727
732-938-4436
732-938-7096 - FAX