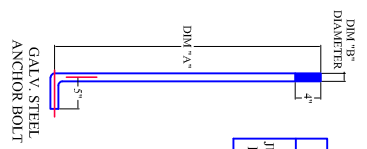
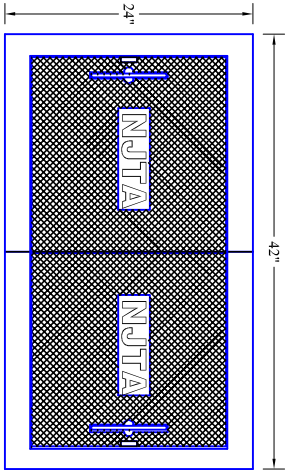


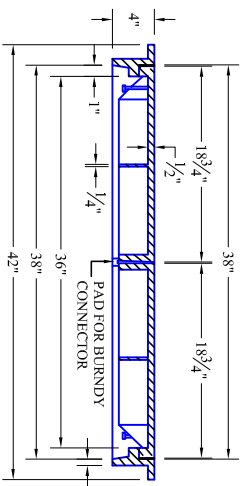
ITEM	DIM. "A"	DIM. "B"	DIM. "C"	DIM. "D"	DIM. "E"
TYPE 1 JUNCTION BOX FOUNDATION	36"	1"	3"	1 1/2"	



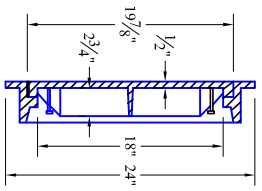
ANCHOR BOLT ASSEMBLY DETAIL



NJTA COVER
NTS

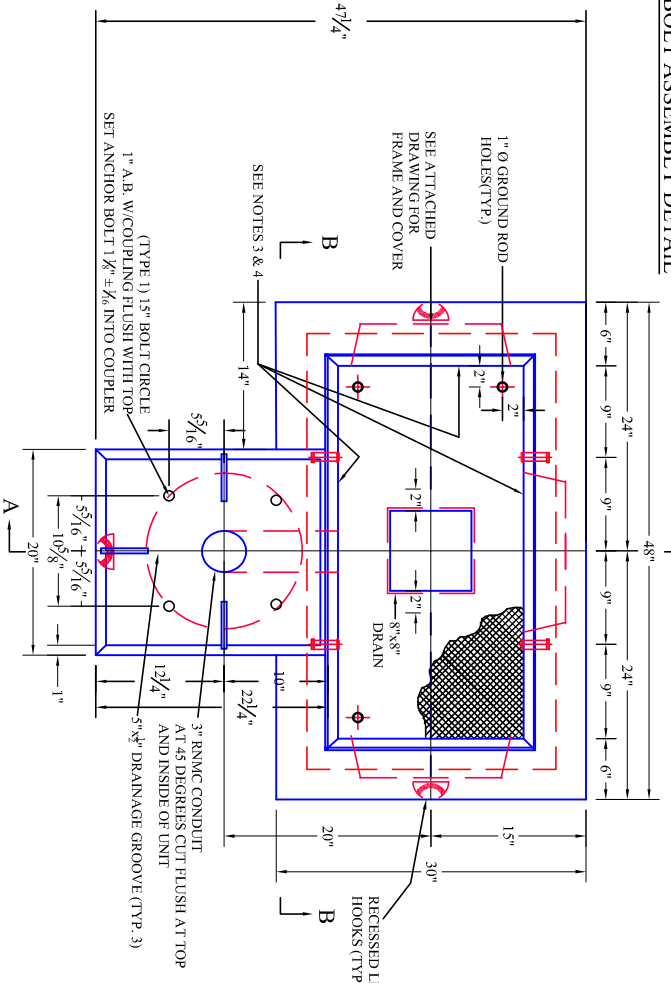


SECTION
NTS



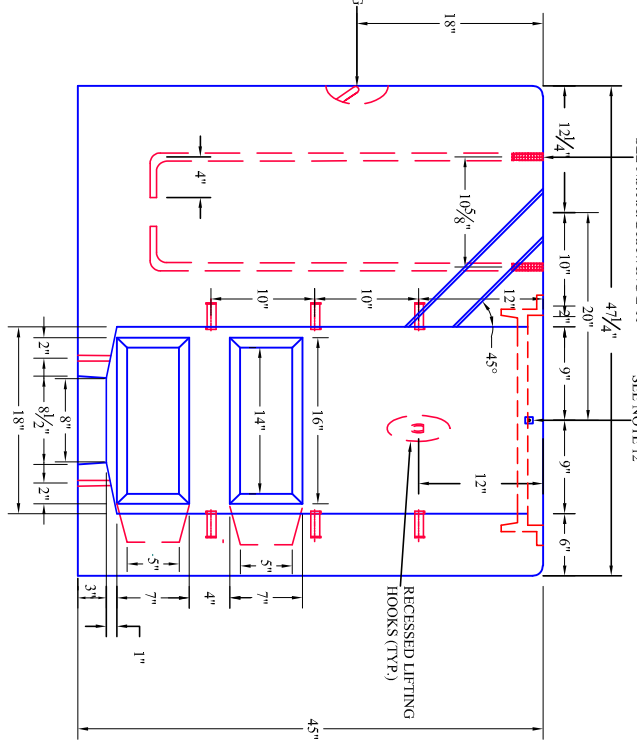
SECTION
NTS

PATTERN # 3361
DOMESTIC OR IMPORTED
AS APPROVED BY THE NJTA



PLAN VIEW
NTS

TYPE 1
JUNCTION BOX FOUNDATION



SECTION A-A
NTS

DECEMBER 2020

SHEET

1 OF 2

WEIGHT

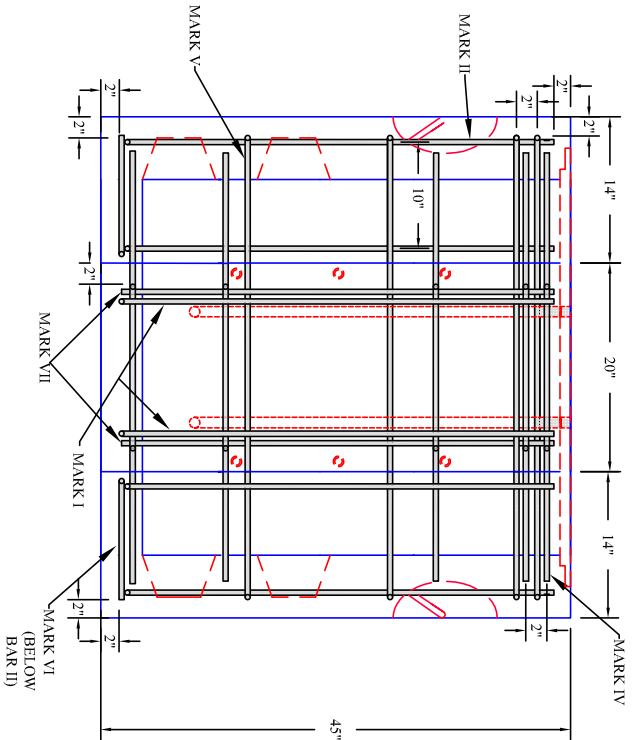
TYPE 1 = 4,900LBS

PRECAST TYPE 1
JUNCTION BOX
FOUNDATION

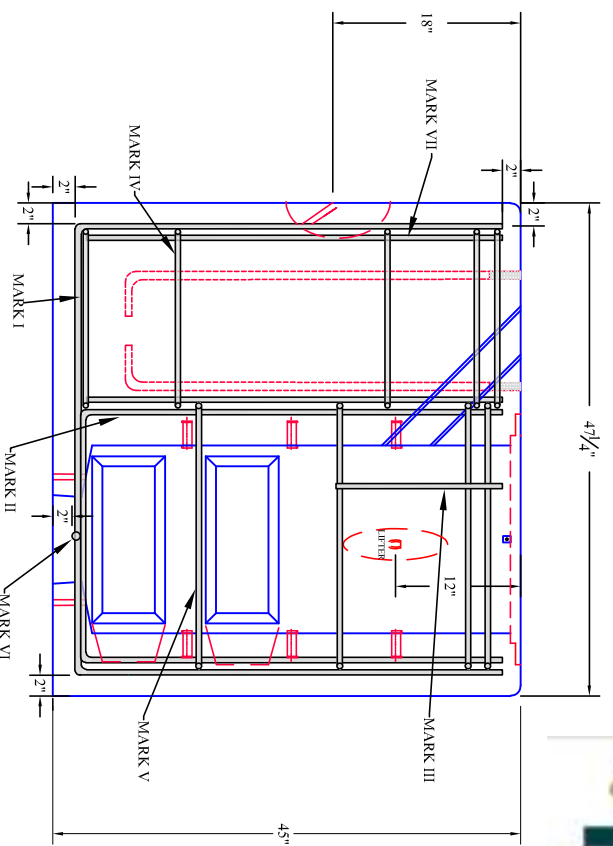
GARDEN STATE PRECAST
FARMINGDALE, N.J.

PHONE #: 732-938-4436

FAX #: 732-938-7096



SECTION B-B
NTS

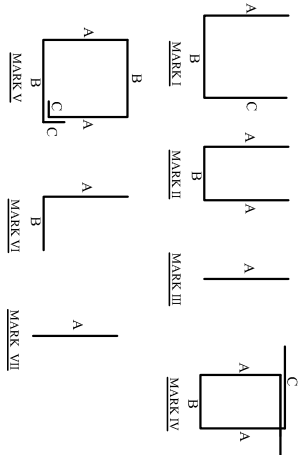


SECTION A-A
NTS

1. COMPACTED 3/4" GRAVEL OR BROKEN STONE BASE REQUIRED FOR ALL PRECAST UNITS. MINIMUM DEPTH 8".
2. A 14"x7"x4" RECESS TO BE PROVIDED IN SIDE AND END WALLS AS SHOWN.
3. AFTER INSTALLATION OF CONDUIT, ALL OPEN RECESSES ARE TO BE COMPLETELY BRICKED AND FINISHED.
4. AN ALTERNATE RECESS ARRANGEMENT MAY BE SUBSTITUTED AS SHOWN BELOW IN DETAIL "A" & "B". IF THIS ARRANGEMENT IS USED AND THE CONDUIT IS BROUGHT INTO THE JUNCTION BOX THROUGH THE TOP OF THE RECESS THEN THE ENTIRE RECESS MUST BE BRICKED FROM TOP TO BOTTOM.
5. PRECAST JUNCTION BOX FOUNDATION MAY BE INSTALLED BEHIND THE GUIDE RAIL OR IN AREAS WHERE THE SLOPE IS LESS THEN 1:22.
6. CLOSE NIPLLE, BRONZE GROUNDING BUSHING, AND CABLE RACKS SUPPLIED BY OTHERS.
7. ANCHOR BOLTS AND COUPLING SUPPLIED BY GSP.
8. BOLTS AND WASHERS SUPPLIED BY OTHERS.
9. RECESSED LIFTING LUGS SUPPLIED ON BACK AND FRONT OF FOUNDATION.
10. NIDOT CLASS "B" CONCRETE.
11. PLASTIC SADDLE RACK WITH 2" THROAT OPENING INSTALLED & SUPPLIED BY OTHERS.
12. FRAME SHALL CONTAIN A GROUND LUG BOLT GROUND LUG BY OTHERS.

MARK	#4 BARS DIMENSIONS			QUANTITY REQUIRED
	A	B	C	
I	41"	43"	41"	2
II	40.5"	24"	---	4
III	16"	---	---	2
IV	17"	16"	28"	5
V	44"	25.5"	5"	4
VI	12"	1"	---	2
VII	41"	---	---	4

***NOTE ALL MEASUREMENTS ARE FROM THE OUTSIDE OF BAR**



DECEMBER 2020

SHEET

2 OF 2

WEIGHT
TYPE 1 = 4,900LBS

PRECAST TYPE 1
JUNCTION BOX
FOUNDATION

GARDEN STATE PRECAST
FARMINGDALE, N.J.

PHONE #: 732-938-4436

FAX #: 732-938-7096