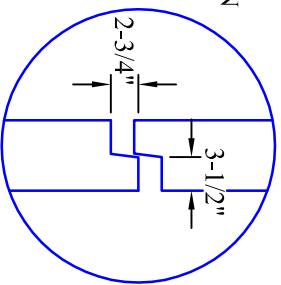
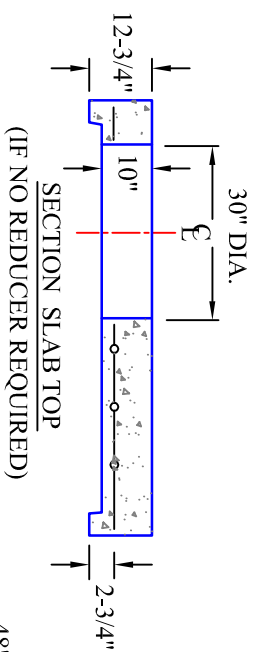


72" BASE WITH REDUCER



NOTE
MASTIC JOINT PER ASTM C990 OR
RUBBER GASKET PER ASTM C443

**PLAN VIEW OF
REDUCER SLAB**

NOTES:

1. 4,000 PSI CONCRETE AT 28 DAYS
2. RISERS, CONES & SLABS IN ACCORDANCE WITH ASTM C-478 LATEST REVISION.
3. MANHOLE ASSEMBLY DESIGNED BY A LICENSED NJ ENGINEER FOR HS-20 LOADS.
4. INVERT LOCATION TO BE WITHIN A TOLERANCE OF +/- 1 INCH.
5. ANY DEVIATION FROM THIS DRAWING MUST BE NOTIFIED TO GSP IN WRITING PRIOR TO PRODUCTION.
6. GRADE- INVERT ELEVATION < 4.0 FT NO STEPS REQUIRED
7. STEEL REINFORCED COPOLYMER STEPS @ 12" O.C.

OPENINGS AS REQUIRED
CHANNEL & BENCH,
AS REQUIRED BY
CONTRACTOR IN FIELD

CIRC.
AREA OF STEEL
.18 SQ IN/FT

30" MIN.
AS REQUIRED

WEIGHT

8" BASE = 4,600 LBS
PER VERTICAL FOOT = 1,800 LBS
16" REDUCER SLAB = 4,160 LBS
10" TOP SLAB = 4,860 LBS

PRECAST

72" DIAMETER MANHOLE
ASSEMBLY WITH TOP SLAB

GARDEN STATE PRECAST

FARMINGDALE, N.J.
PHONE #: 732-938-4436 FAX #: 732-938-7096

SHEET

1

OF

1