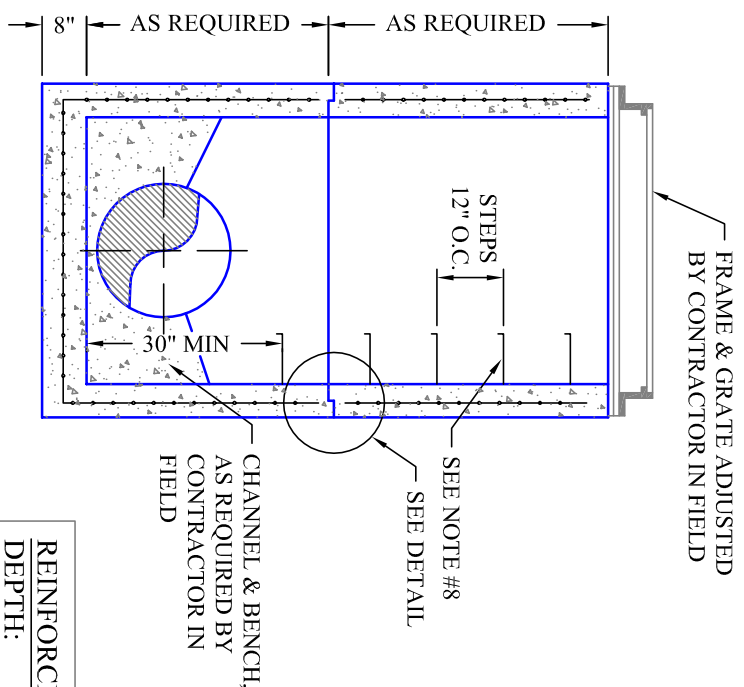


GENERAL NOTES:

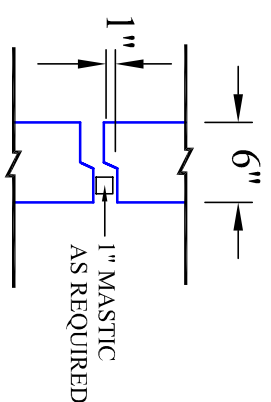
1. 4,000 PSI CONCRETE AT 28 DAYS
2. CONSTRUCTION PER ADSTM C913, LATEST REVISION.
3. UNIT HEIGHTS AS REQUIRED - IN 6" INCREMENTS
4. ANY ALTERATION TO THIS DRAWING MUST BE MADE TO GARDEN STATE PRECAST IN WRITING PRIOR TO PRODUCTION.
5. GRADE-INVERT ELEVATION < 4.0 FEET- NO STEPS ARE REQUIRED.
6. DRAWING NOT TO SCALE
7. INVERT LOCATION TO BE WITHIN A TOLERANCE OF +/- 1".
8. STEEL REINFORCED COPOLYMER STEPS @ 12" O.C.

REINFORCEMENT
WELDED WIRE FABRIC PER ASTM A-185, GRADE 70
REINFORCEMENT BARS PER ASTM A-615 GRADE 60



SECTION VIEW

REINFORCEMENT	
DEPTH:	
1 TO 4 FT	- As = 0.08 in ²
5 TO 8 FT	- As = 0.12 in ²
9 TO 12 FT	- As = 0.18 in ²
13 TO 16 FT	- As = 0.24 in ²



JOINT DETAIL

SHEET 1 OF 1	WEIGHT RISER PER VERTICAL FOOT = 1,275 LBS 8" BASE = 2,260 LBS LIFTING HOOKS	PRECAST "B" OR "E" TYPE BASIN 42" x 48" I.D.	GARDEN STATE PRECAST FARMINGDALE, N.J. PHONE #: 732-938-4436 FAX #: 732-938-6069
-------------------------------------	---	---	--