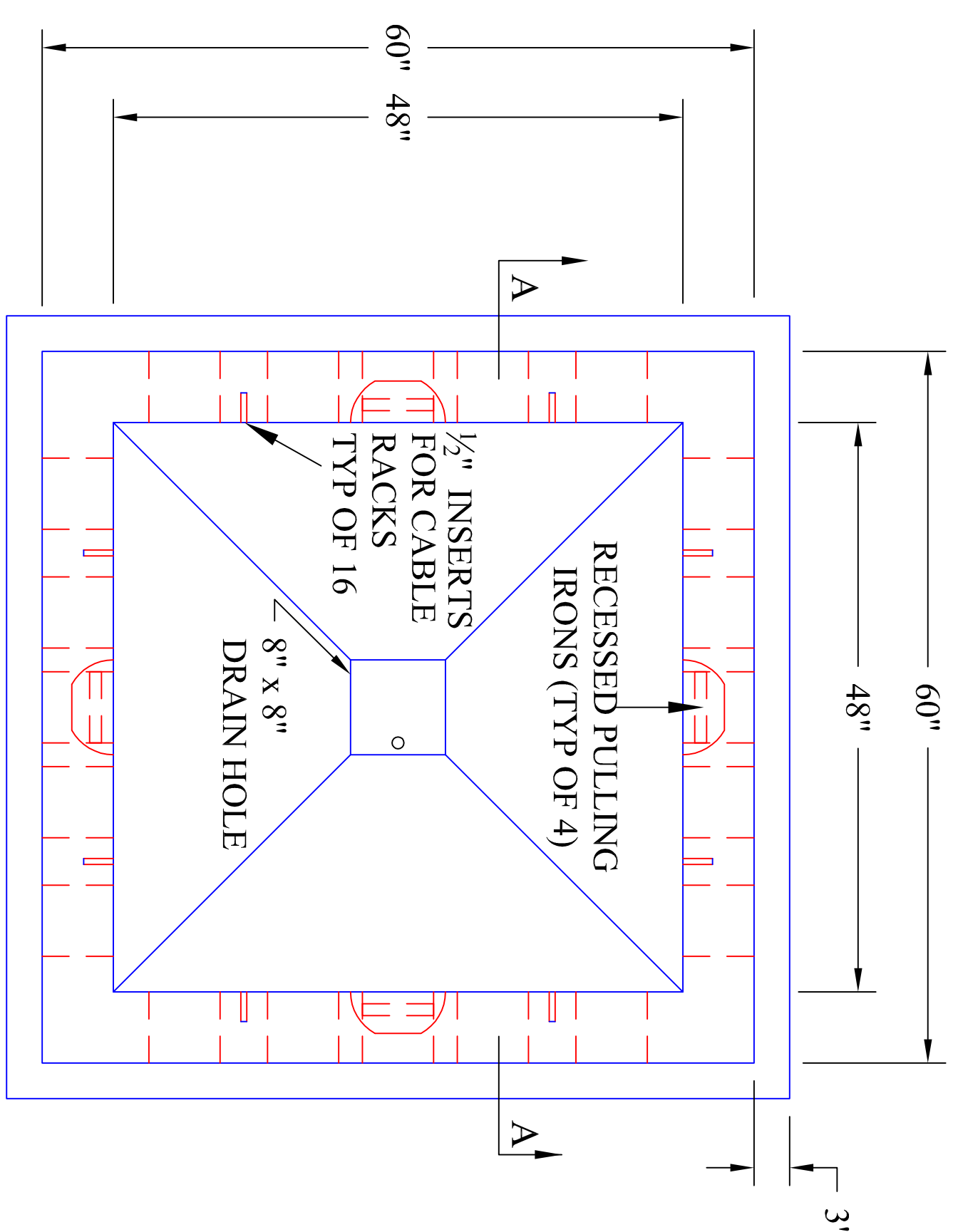
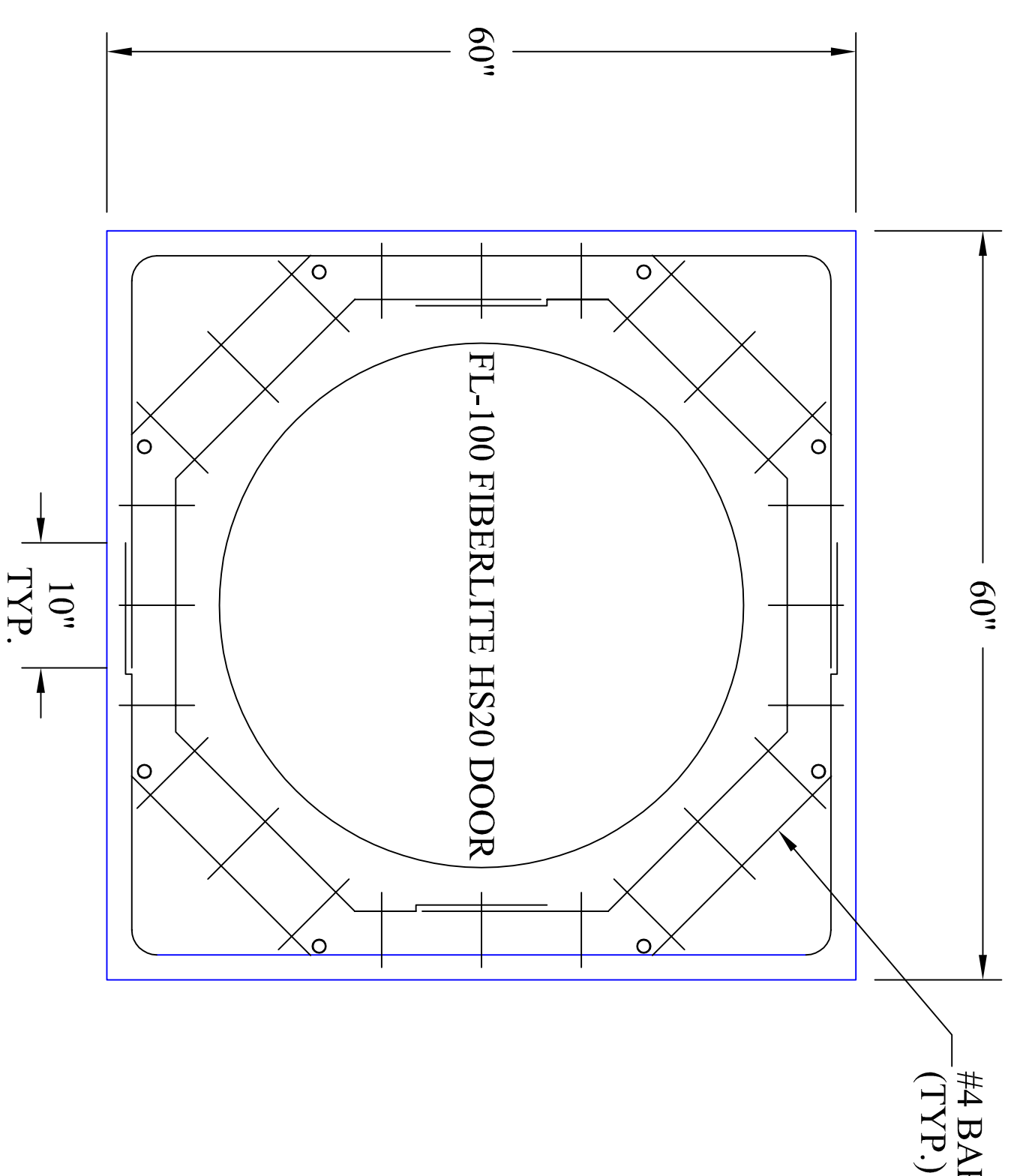


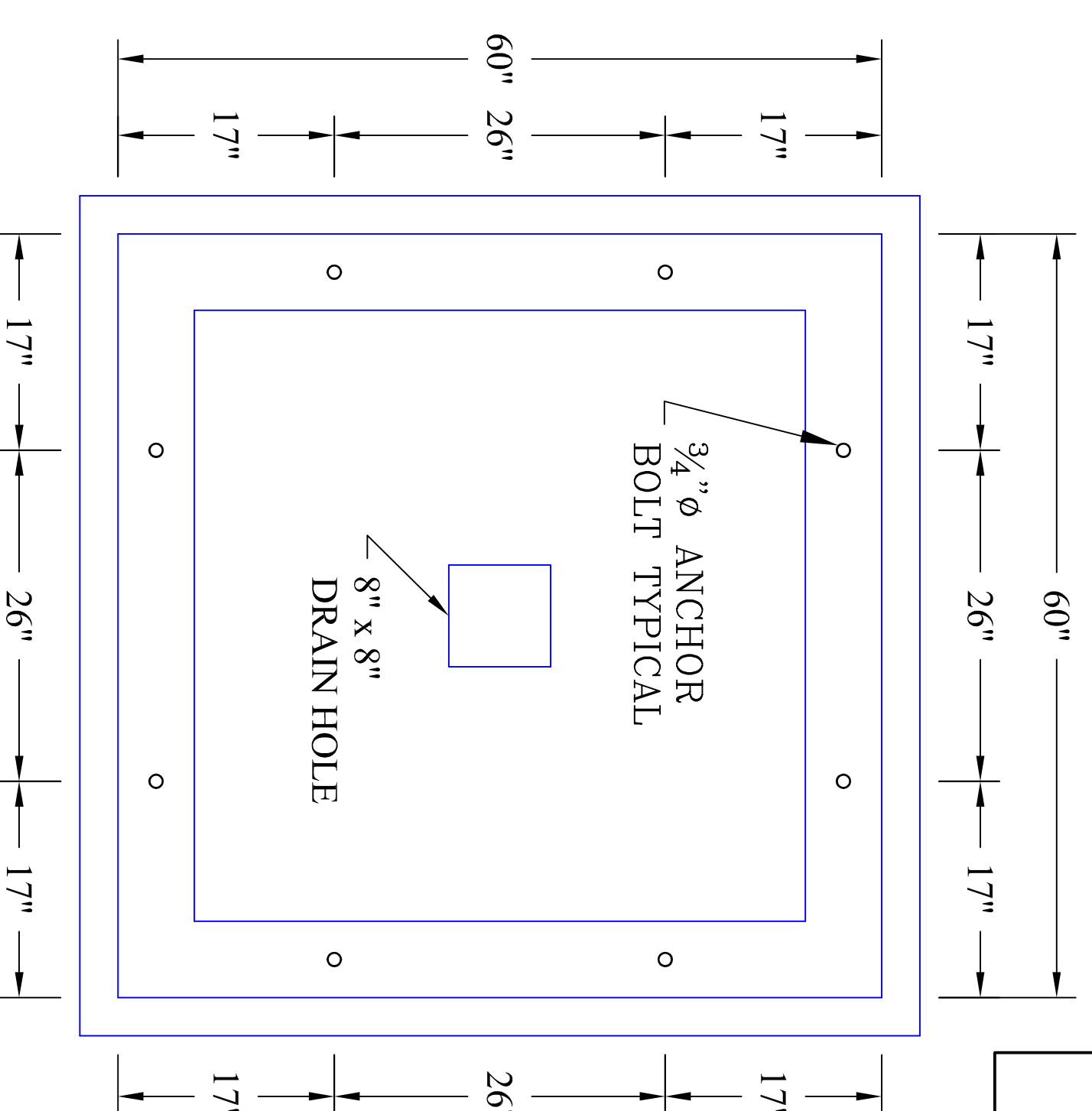
WEIGHT BASE = 8,425 LB
WEIGHT TOP = 3,345 LB



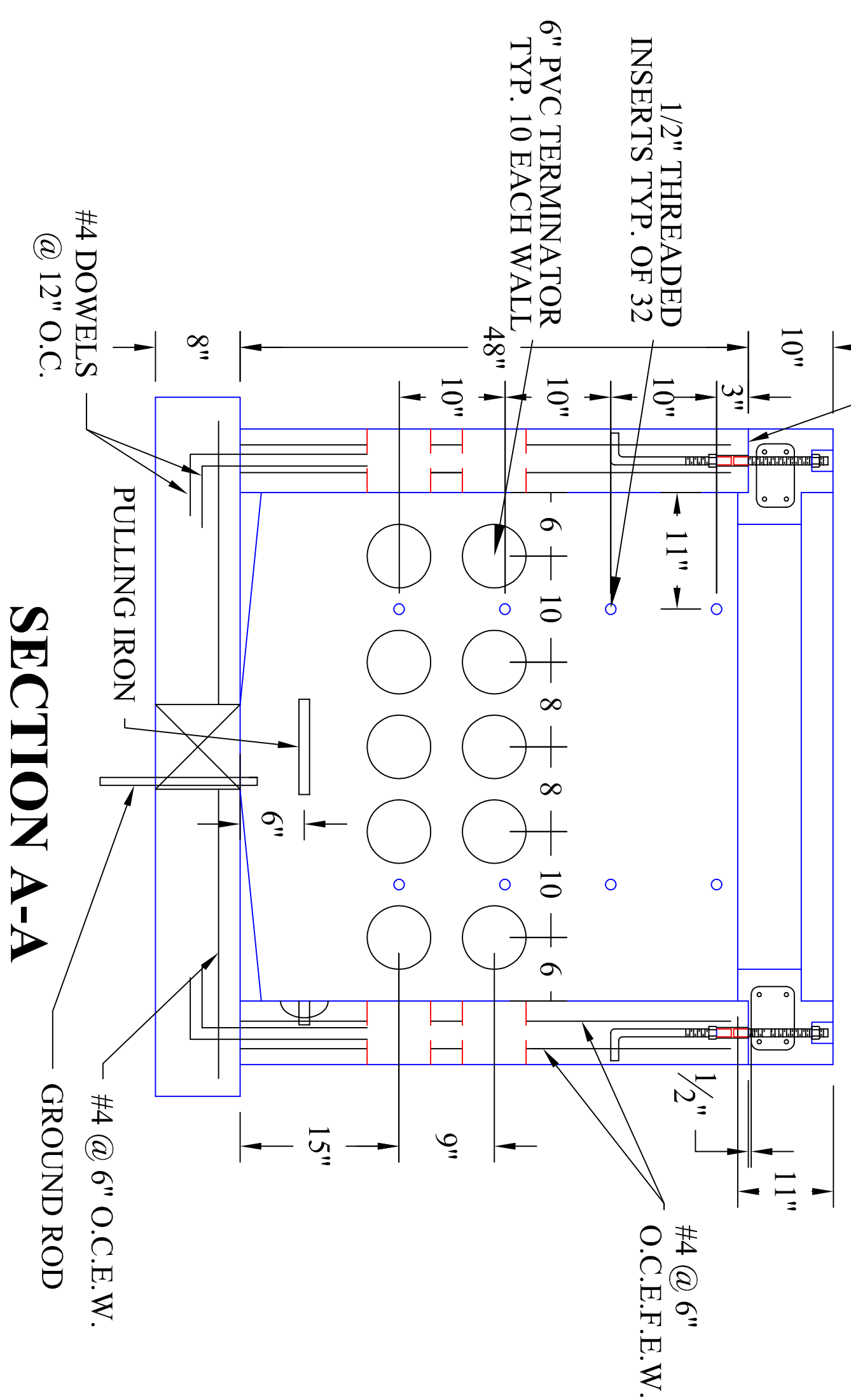
PLAN VIEW



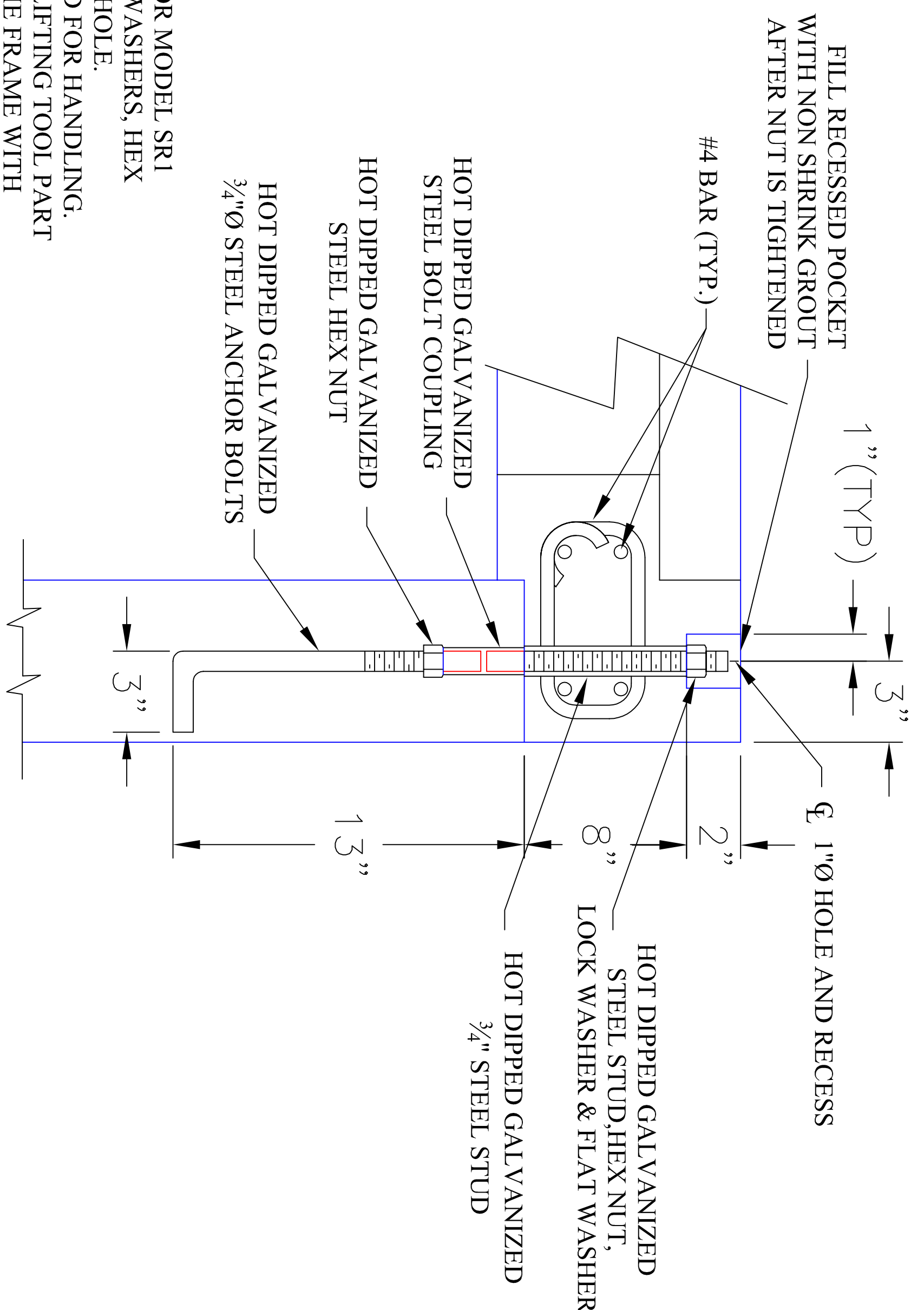
PLAN VIEW TOPSLAB



3/4" Ø ANCHOR BOLT LOCATION



SECTION A-A



ANCHOR BOLT DETAIL

- NOTES**
1. BOTTOM OF MANHOLE SHALL BE SLOPED TOWARDS DRAIN HOLE.
 2. CABLE RACKS SHALL BE MODEL 3SR3 AS MANUFACTURED BY UNDERGROUND DEVICES, INC. OR MODEL SR1 MANUFACTURED BY UNDERGROUND SUPPLY CO., L.C. EACH RACK SHALL BE SUPPLIED WITH WASHERS, HEX HEAD SCREWS AND LOCKS. A TOTAL OF EIGHT (8) CABLE RACKS SHALL BE INSTALLED PER MANHOLE.
 3. PULLING IRONS BY DAYTON RICHMOND MODEL 6U/A44 HOT-DIPPED GALVANIZED. ALSO USED FOR HANDLING.
 4. MANHOLE FRAME AND COVER SHALL BE FIBRELITE PART # FL100HD/NITA. ONE (1) FIBRELITE LIFTING TOOL PART #FL7A SHALL BE SUPPLIED WITH EACH MANHOLE. THE MANHOLE COVER SHALL SIT FLUSH IN THE FRAME WITH THE TOP OF THE MANHOLE AND SHALL HAVE THE LETTERS "NITA ELECTRIC" PRINTED ON IT.
 5. ANCHOR BOLTS FOR SECURING THE MANHOLE TOP TO THE BASE SHALL CONFORM TO ASTM A307 CLASS A. THREADING SHALL BE 8 THREADS PER INCH, NC CLASS 2 AND SHALL BE HOT-DIPPED GALVANIZED IN ACCORDANCE WITH ASTM A153.
 6. THE MANHOLE SHALL BE CONSTRUCTED WITH 5000 PSI AIR ENTRAINED CONCRETE.
 7. THE MANHOLE SHALL BE CONSTRUCTED WITH CONDUIT KNOCKOUTS SIZED AS SHOWN ON THIS SHEET. A MINIMUM OF FORTY (40) KNOCKOUTS SHALL BE AVAILABLE. DIVIDED AMONG THE FOUR WALLS OF THE MANHOLE.
 8. THE TOP SLAB SHALL BE SECURED TO THE BASE AT EIGHT (8) LOCATIONS USING ANCHOR BOLTS AS SHOWN IN THE ANCHOR BOLT DETAIL.
 9. GROUND RODS SUPPLIED BY OTHERS.
 10. 1/2" THREADED INSERTS MANUFACTURED BY PA INSERT COMPANY.
 11. BUTYL MASTIC SEALANT MODEL CS-102 BY CONCRETE SEALANTS, INC. PER ASTM C-990.

NO.	DATE	REVISION
0	10/5/11	SUBMITTAL

<p>NITA APPROVAL</p>	<p>CONTRACTOR APRVL STAMP SIGNATURE</p>
<p>NEW JERSEY TURNPIKE AUTHORITY NEW JERSEY TURNPIKE ROADWAY LIGHTING MANHOLE</p>	
<p>GARDEN STATE PRECAST FARMINGDALE, NJ 07727 PHONE: 732-938-4436 FAX: 732-938-6069</p>	

