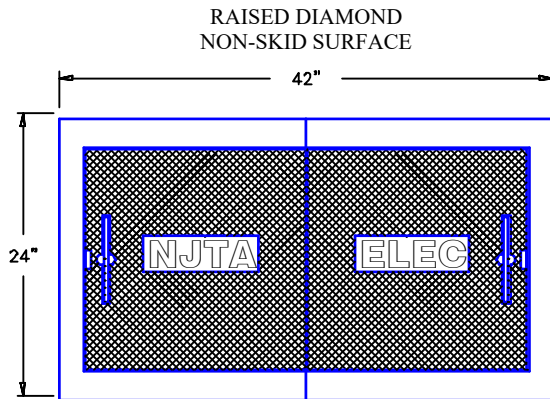
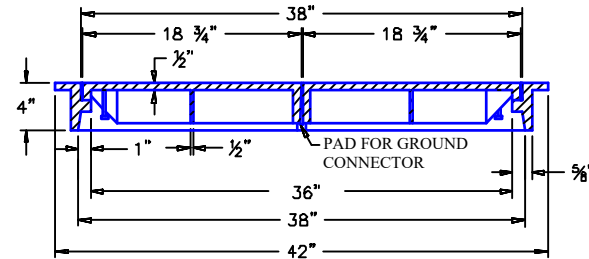


FRAME: GRAY IRON ASTM A48, CLASS 30B  
 COVER: DUCTILE IRON, ASTM A536, GRADE 65-45-12  
 FRAME AND COVER SHALL BE HOT DIPPED  
 GALVANIZED IN ACCORDANCE WITH ASTM A153.

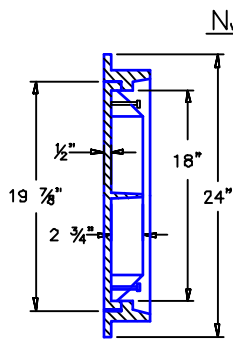


RAISED DIAMOND  
 NON-SKID SURFACE

PATTERN # 3361  
 DOMESTIC OR IMPORTED  
 AS APPROVED BY THE NJTA  
 CAST IN TOP OF UNIT

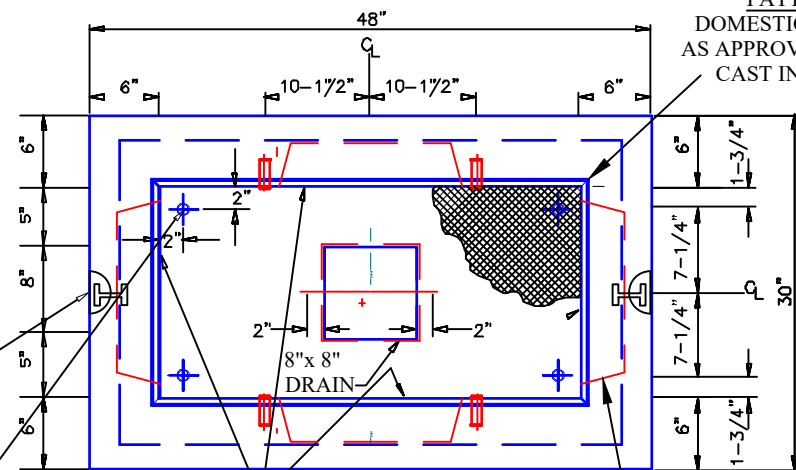


SECTION  
 NTS



NJTA COVER  
 NTS

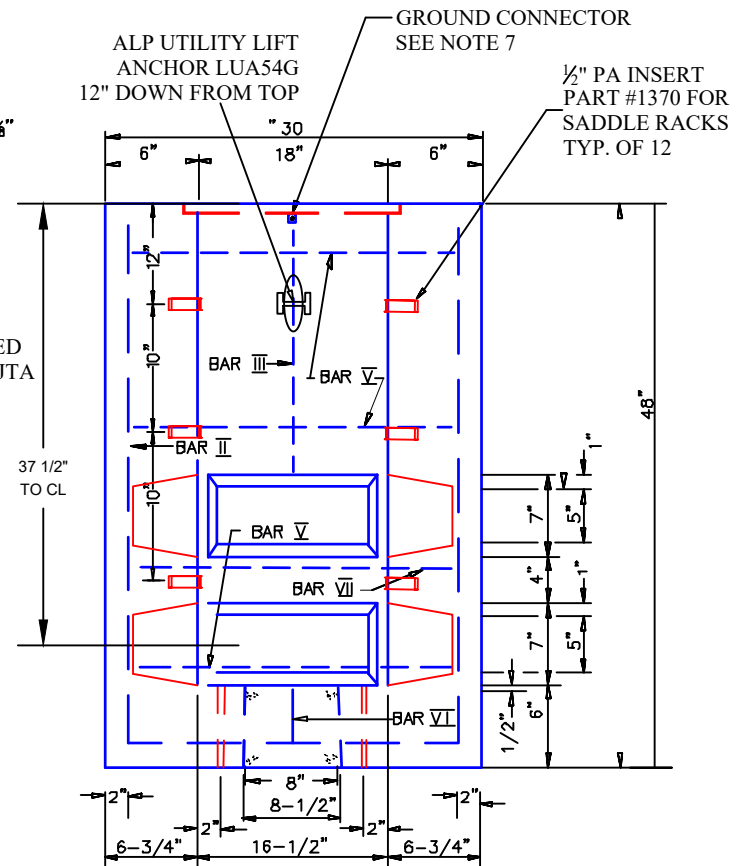
SECTION  
 NTS  
 ALP UTILITY LIFT  
 ANCHOR LUA54G  
 12" DOWN FROM TOP  
 (ROTATED FOR CLARITY)  
 (4) 1" PVC FOR  
 GROUND RODS



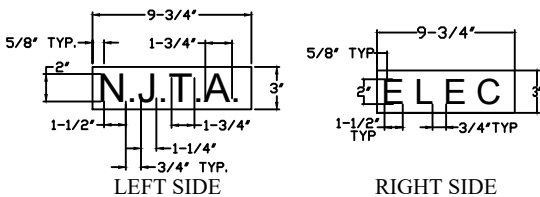
SEE NOTE 1

PATTERN # 3361  
 DOMESTIC OR IMPORTED  
 AS APPROVED BY THE NJTA  
 CAST IN TOP OF UNIT

7"x14"x4" KNOCKOUT  
 RECESS (TYP.)



SECTION B-B  
 NTS



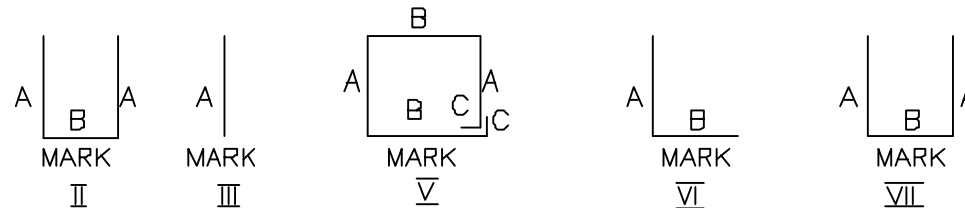
JUNCTION BOX COVER  
 EMBOSING DETAILS  
 NTS

PLAN  
 NTS

# TYPE C JUNCTION BOX

ITEM  
TYPE C JUNCTION BOX

MARK	SIZE NO. 4 RODS			NO. RODS REQ.
	A	B	C	
<u>II</u>	42"	25"	—	4
<u>III</u>	21"	—	—	2
<u>V</u>	44"	26"	4"	3
<u>VI</u>	2"	16"	—	2
<u>VII</u>	15"	26"	—	2



NOTES:

1. 14"x7"x4" KNOCKOUT RECESSES TO BE PROVIDED IN SIDES AND END WALLS.
2. CLOSE NIPPLE, BRONZE GROUNDING BUSHING SUPPLIED BY OTHERS.
3. BOLTS AND WASHERS SUPPLIED BY OTHERS.
4. RECESSED LIFTING LUGS SUPPLIED ON BACK AND FRONT OF FOUNDATION.
5. CLASS B CONCRETE.
6. PLASTIC SADDLE RACK WITH 2" THROAT OPENING INSTALLED BY OTHERS.
7. FRAME SHALL CONTAIN A GROUND LUG CONNECTION AS SHOWN ON STANDARD DRAWING.
8. GROUNDING CABLE BY CONTRACTOR.