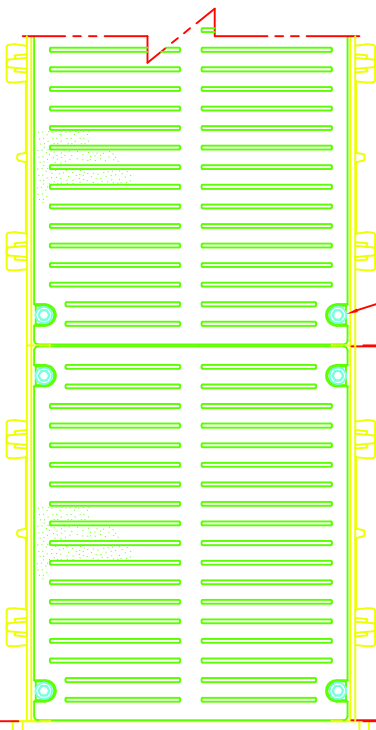
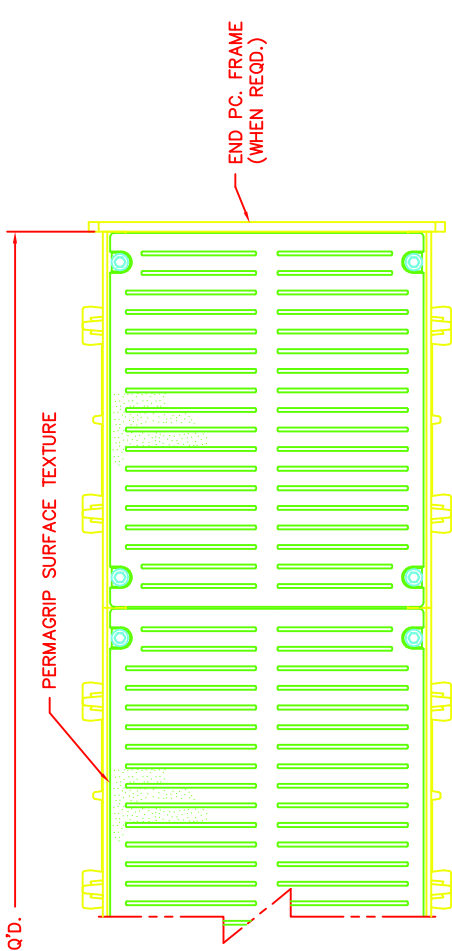
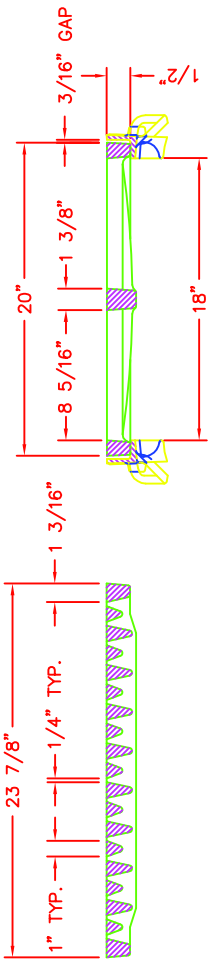


LENGTH REQ'D.



GRATE BOLTED TO FRAME w/
3/8-16UNC X 2 STNLS. STL.
HEX HEAD BOLT w/WASHER
(4 PER GRATE, KIT #91350)

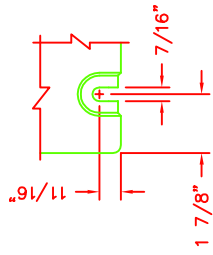
END PC. FRAME
(WHEN REQ'D.)



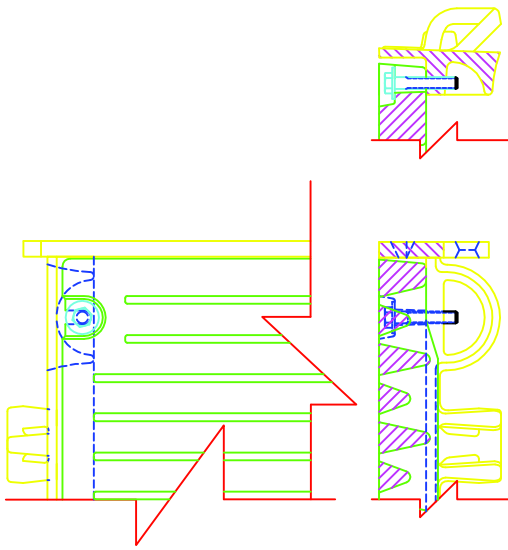
R-4999-FX
TYPE "P" GRATE
WITH TYPE "B" FRAME
TYPICAL SECTION

NOTES: FRAMES AND COVERS ARE FURNISHED IN STANDARD 2'-0" INCREMENTS. SPECIAL LENGTH FRAMES AND COVERS ARE FURNISHED FOR ANY OVERALL LENGTH.
COMPONENT NOS.: SIDE PC. FRAME 4999-2415, END PC. FRAME 4990-3120, GRATE 4999-3209

MATERIAL: SIDE PC. FRAMES - CAST GRAY IRON ASTM A-48, CLASS 35A
END PC. FRAMES AND GRATES - CAST GRAY IRON ASTM A-48, CLASS 35B
FINISH: NOT PAINTED



BOLT SLOT DETAIL
SCALE 1:4



FRAME & COVER
SHOWING DEBRIS CHUTE
SCALE 1:4

DR.	K. HOGUE	SCALE	1/8"=1"	TITLE	R-4999-FX
CH.					TYPE "P" GRATE W/ TYPE "B" FRAME
APP.			DWG. CHK.		NEENAH FOUNDRY COMPANY NEENAH, WISCONSIN 54956
DATE	12-10-08				INF-4999FX P/B